

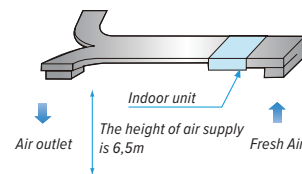
FRESH AIR PROCESSING UNIT

CNFA-2-XMi D125÷D140



100% FRESH AIR PROCESSING UNIT

Both fresh air filtration and heating/cooling can be achieved in a single system. Indoor units and the Fresh Air Processing Unit can be connected to the same refrigerant system, increasing design flexibility and greatly reducing total system costs.



FLEXIBLE DUCT DESIGN

The Fresh Air Processing unit offers external static pressures of up to 200Pa, allowing the use of long ducts.

FRESH AIR SALUBRITY

Enjoy the comfort and health benefits of fresh air being drawn into your working or living environment.

STATIC PRESSURE WITH 20 STEPS CONTROL

Depending on the installation environment, units can be precisely set up to 20 steps of static pressure/airflow rate combinations via wired remote controller, providing comfortable environment suitable for any application.

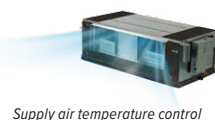


SUPPLY AIR TEMPERATURE CONTROL

While other VRF indoor units control the return air temperature as set point, the fresh air processing unit controls the supply air temperature as set point, in order to more precisely manage the outdoor fresh air and release it indoor.



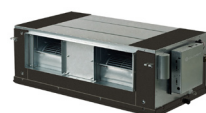
Return air temperature control



Supply air temperature control

technical data

CNFA-2-XMI D125÷D140



FRESH AIR PROCESSING UNIT

Size	CNFA-2-XMi	D125	D140
Cooling ⁽¹⁾	Capacity	kW	12,5
	Power input	W	480
	Operating temperature range (DB)	°C	20 ~ 43
Heating ⁽²⁾	Capacity	kW	10,5
	Power input	W	480
	Operating temperature range (DB)	°C	-5 ~ 16
Pipe connections	Liquid	mm	Ø 9,53
	Gas	mm	Ø 15,9
	Drain pipe	mm	Ø 25
Dimensions (Width x Height x Depth) ⁽⁵⁾	mm	1322×423×691	1322×423×691
Weight	kg	68	68
Portata aria ⁽³⁾	m ³ /h	2000/1917/1833 1750/1667 1583/1500	2000/1917/1833 1750/1667 1583/1500
External static pressure	Pa	180 (30~200)	180 (30~200)
Sound pressure level ^{(3) (4)}	dB(A)	48/47/46 45/44/43/42	48/47/46 45/44/43/42
Sound power level ^{(3) (4)}	dB(A)	66/65/64 63/62/61/60	66/65/64 63/62/61/60
Power supply	V/Ph/Hz	220-240/1~/50	

Data measured at standard external static pressure.

(1) Outdoor temperature 33°C DB/28°C WB. Piping length between outdoor and indoor units is 7,5 m, height difference is zero

(2) Outdoor temperature 0°C DB/-2,9°C WB. Piping length between outdoor and indoor units is 7,5 m, height difference is zero.

(3) Data refer to the 7 fan speeds, in descending order.

(4) Sound values are measured in a semi-anechoic room, at a position 1,4 m below the unit.

(5) Unit body dimensions given are the largest external dimensions of the unit, including hanger attachments

The Fresh Air Processing Unit can be used either independently or in conjunction with other types of indoor unit. If used independently, the total capacity of the Fresh Air Processing Units must be between 50% and 100% of that of the outdoor units. If used in conjunction with other types of indoor unit, the total capacity of the Fresh Air Processing Units must not exceed 30% of that of the outdoor units and the total capacity of indoor units + Fresh Air Processing Units must be between 50% and 100% of that of the outdoor units .

accessories

RM12D

Infrared remote control

WDC-86E/KD

Compact wired controller

WDC-120G/WK

Wired controller

SBH-04

Drain pump (sizes D125-D140)

Data contained in this document are not binding and may be changed by the Manufacturer without notice

www.clivet.com

REF DG24L503GB-00